



INDOOR MAPPING FAST ACCURATE COMPUTER GENERATED

Employing a handheld scanner and software we can accurately create a floor map as fast as we can walk a space. We can generate an accurate floor map and deliver your files in standard formats, usually the same day. Our base deliverable is a raster-based PDF typically depicting everything within the space in plan view.

We have scanned many local buildings from including warehouses, retail, public, and municipal spaces. We see many benefits to computer generated As-built plans compared to field measured plans. Let us know how we can help you improve your workflow using everyday technology for everyday work!



Advantages over traditional measuring

Fast, Cost Effective and Accurate
Data does NOT miss any critical items, wall offsets, nooks etc.
Plan is directly modeled from data, no human error and little input.
Output in Adobe PDF and AutoCAD DWG format to scale.



What do you get?

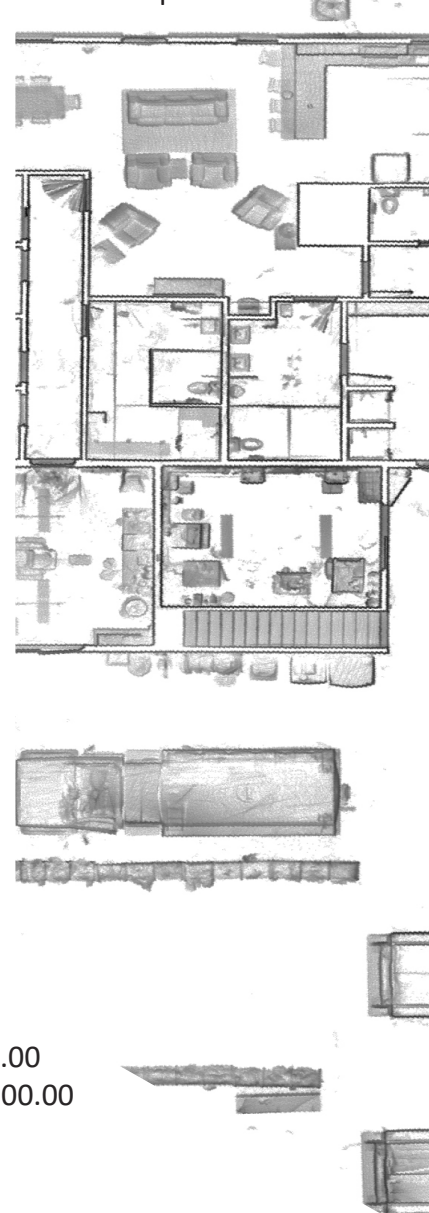
PDF Image to scale/ measurable cloud interface
LAZ Point Cloud file
RCP Recap™ File with LAZ file imported
CAD file with raster background
To Scale PDF and GEOTIFF files



What is the cost?

\$200 per floorplan. (ie first, second, basement)
plus 3 cents per Sq. Ft. (\$500 minimum with 1 floor included)
Travel Time if your outside of Lexington KY
example:(within Lexington KY city limits) with no travel expenses
The cost of a 0 to 10,000 Sq. FT Space with (1) Floor would be \$500.00
The cost of a 100,000.00 Sq. Ft. Space with (1) Floor would be \$3,200.00

Interior Map

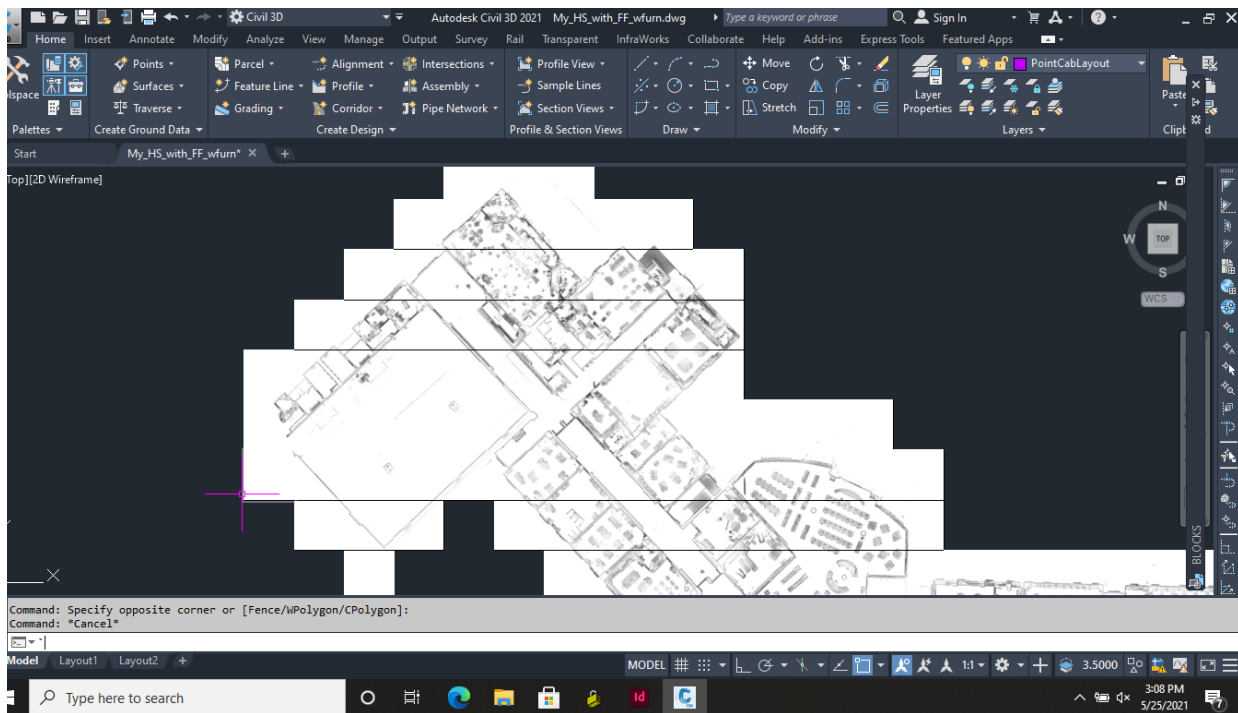


contact: pbullock@cdpengineers.com

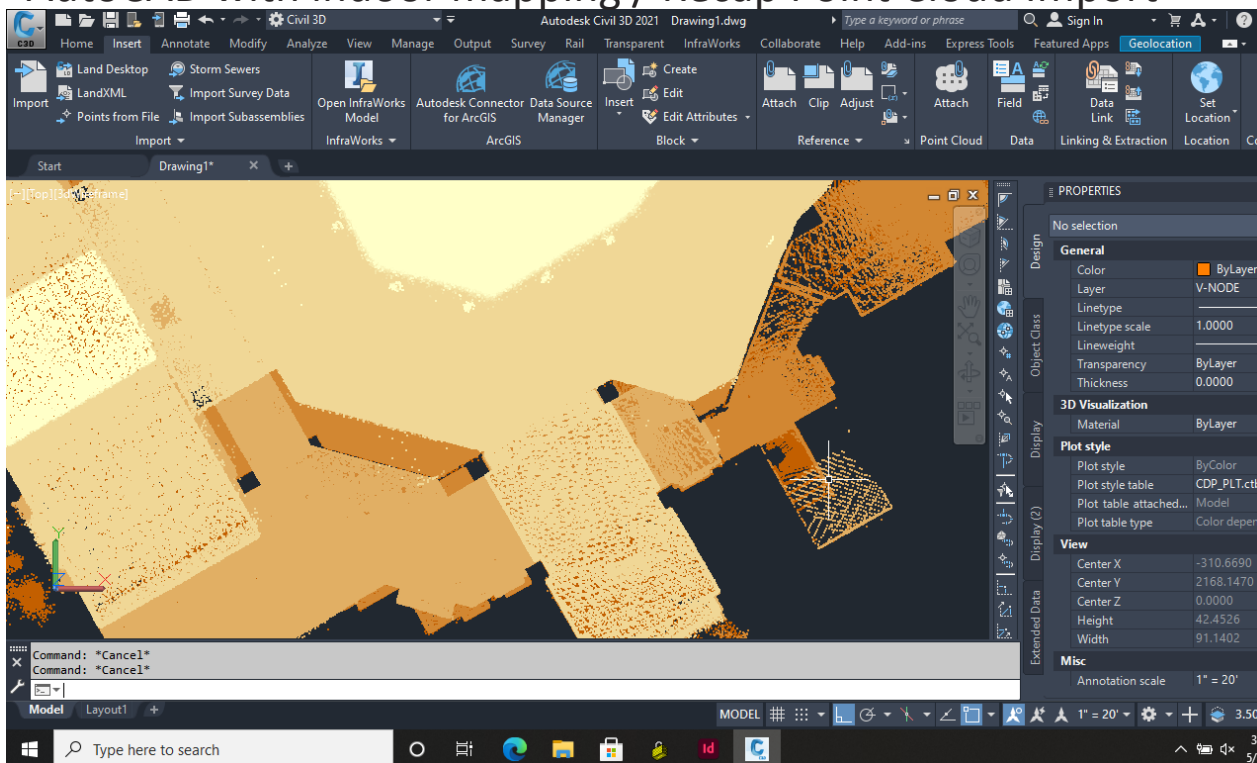


INDOOR MAPPING FAST ACCURATE COMPUTER GENERATED

AutoCAD with indoor mapping / scan raster background



AutoCAD with indoor mapping / Recap Point Cloud Import



contact: pbullock@cdpengineers.com

3250 Blazer Parkway Suite 200 Lexington KY 40509

www.mapsync.com