

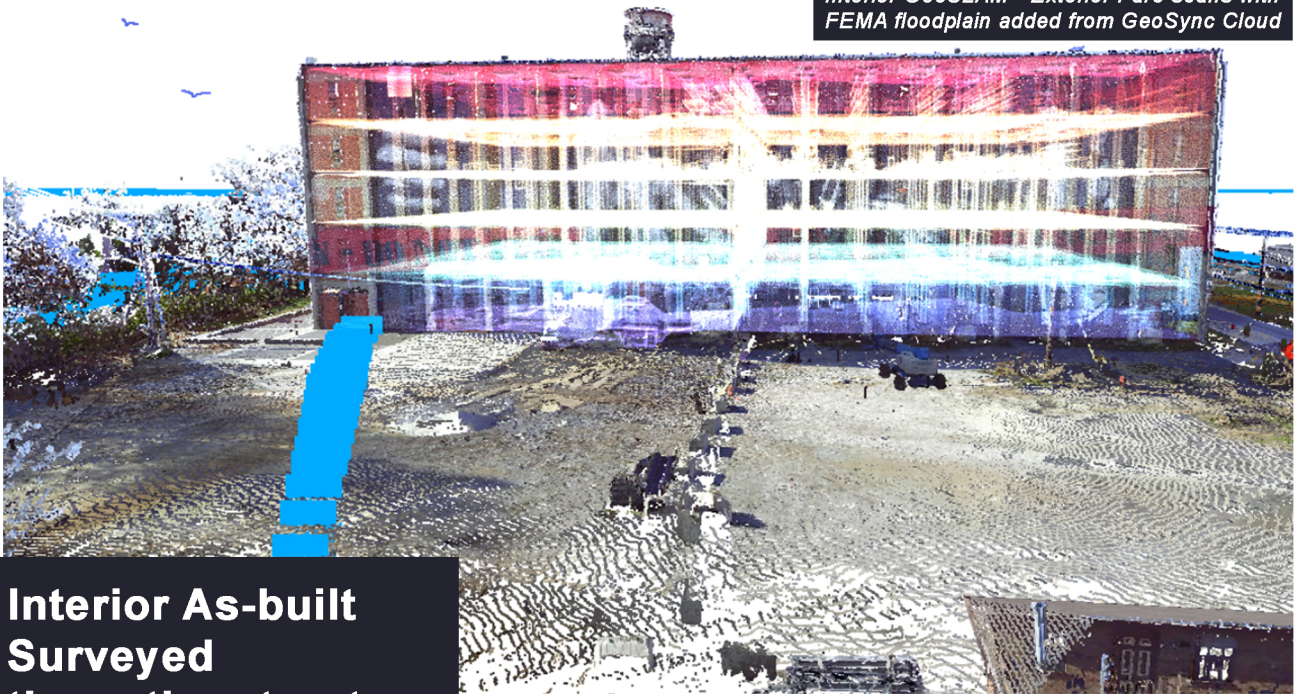
# Pepper Rickhouse

**Modeled 5 Story  
Building in detail  
in less than 3 hours  
using Zeb Revo**



[GeoSLAM.com](http://GeoSLAM.com)

Interior GeoSLAM - Exterior Faro scans with FEMA floodplain added from GeoSync Cloud



**Interior As-built Surveyed the entire structure in under a day.**

**Complex As-builts**

**Quick**

**Accurate**

**BIM Base**

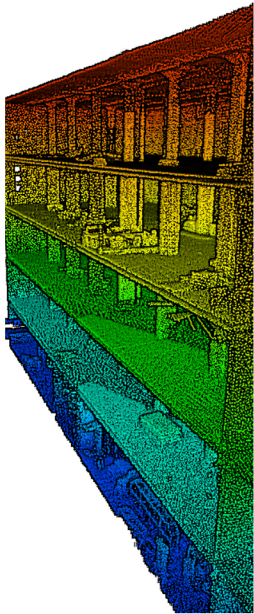
5 Story Warehouse under renovation surveyed in 5 setups total data collection time was less than 3 hours. MapSync completed the As-built in 2018 using Zeb-Revo and GeoSLAM Draw.

**About MapSync:**

MapSync Geomatics group provides software and surveying support for many local and regional firms.

MapSync provides scanning for a variety of uses including documentation of both buildings and mechanical equipment.

We document as-built existing conditions in a number of ways creating interactive scenes and 3D point clouds that are true to scale.



We can capture and publish 3D point clouds from practically any source to keep your data up to date and working toward your important goals.

The GEOSLAM Zeb-Revo captures and models complex 3D data up to 10 times faster than other methods, this allows us to deliver rapid results that save customers time and money.

We strive to scan in the morning and deliver output in the afternoon, within minutes we can build a highly accurate 3D model of any indoor, underground or difficult to access environment.

Our staff of software designers can custom develop and tailor custom solutions for your particular workflow.

We provide the point cloud and the viewer to display both 2D and 3D data in ways that are both intuitive and impactful.

We can provide workflows that provide users precise control over how data is organized, delivered and viewed in many formats.

The Zeb-Revo and GeoSLAM Draw's data imported into CAD makes As-built drawings easy to create and modify.

